

# CRASH CRUSHER

## About Us

Syrian Heavy Industries Company is a leading manufacturer of crushing and screening equipment, integrating research, engineering, production and after-sales service under one roof. With years of experience in the mining and aggregates industry, we provide reliable high-performance solutions including:

- Jaw Crushers
- Impact Crushers
- Hammer Crushers
- Mobile Crushing Stations
- Vibrating Screens

**Our mission is to deliver durable machines, smart solutions and long-term value that help our customers maximize productivity and profitability.**



# Jaw Crusher Series

## Reliable Primary Crushing for Heavy-Duty Applications

### Product Overview

Crash Crusher Jaw Crushers are engineered to deliver high performance and long-term reliability in primary crushing applications

They are specifically designed to handle large feed sizes and hard, abrasive materials making them an ideal choice for quarrying and mining operations

Based on the compression crushing principle, Jaw Crushers provide consistent output stable operation, and reduced operating costs

### Why Choose Crash Crusher Jaw Crushers?

- Heavy-duty construction for continuous operation
- High capacity with large feed opening
- Excellent performance with hard and abrasive rocks
- Easy maintenance and quick replacement of wear parts
- Energy-efficient operation
- Compatible with stationary and mobile crushing plants

### Working Principle

The Jaw Crusher operates through a reciprocating motion between a fixed jaw and a moving jaw. Material is crushed progressively by compression until it reaches the desired size and is discharged from the bottom of the crusher.



## This simple and robust design ensures:

- Stable performance
- Reduced downtime
- Long service life

## Applications

- Quarries
- Mining operations
- Limestone, Granite, Basalt
- Primary crushing plants

## Key Features

- Heavy-duty welded steel frame
- High manganese steel jaw plates for superior wear resistance
- Easy and reliable CSS adjustment system
- Optimized design for reduced vibration and high stability
- Long service life with low maintenance costs



Model	Feed opening size (mm)	Max Feeding Size(mm)	capacity (t/h)	Motor power (kw)
JC400x600	600 x 400	350	60 –15	30
JC600x900	900 x 600	500	120–48	55-75
JC750x1060	1060 x 750	550	208–51	110
JC1000X1200	1200 x 100	750	304–144	160

# Impact Crusher Series

## Efficient Secondary & Tertiary Crushing Solutions

### Product Overview

Crash Crusher Impact Crushers are engineered to deliver high reduction ratios and superior product shape in secondary and tertiary crushing applications.

By utilizing the high-speed impact crushing principle, these crushers produce high-quality aggregates with consistent size and excellent cubic shape, making them ideal for quarrying and aggregate production.

### Why Choose Crash Crusher Impact Crushers?

- High reduction ratio for efficient crushing
- Excellent final product shape and uniform size
- Heavy-duty design for continuous operation
- Adjustable curtains for precise product control
- Easy maintenance and quick replacement of blow bars
- Optimized power consumption with high output

### Working Principle

The Impact Crusher operates with a high-speed rotor fitted with blow bars, which hurls material against impact plates (curtains), causing it to fracture into smaller, controlled sizes.



## This crushing method ensures:

- Accurate control of final product size
- High crushing efficiency
- Stable and reliable operation

## Applications

- Quarrying operations
- Secondary and tertiary crushing
- Limestone, Dolomite, Basalt
- High-quality aggregate production

## Key Features

- Reinforced steel housing for impact resistance
- Dynamically balanced rotor for smooth operation
- High wear-resistant blow bars
- Adjustable curtain system for flexible output sizes
- Reduced vibration and extended service life



Model	Feed opening (mm)	Maximum Feeding Size mm	Outlet Size (mm)	Capacity (t/h)	Power (kw)
IC86	800*600	150	10-50	20-60	90
IC1010	1000*1000	200	10-60	75-160	160
IC1313	1300*1300	250	10-70	200-350	200
IC1513	1500*1300	300	10-80	250-500	315

# Hammer Crusher

## Cost-Effective Crushing for Medium-Hard Materials

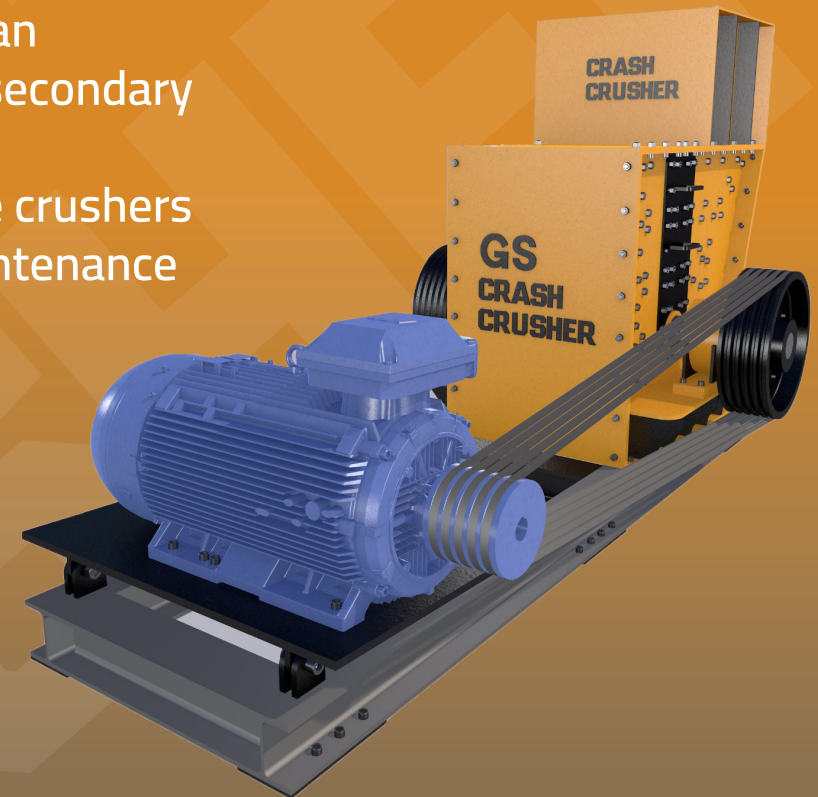
### Product Overview

Crash Crusher Hammer Crushers are designed to provide an efficient and economical crushing solution for primary or secondary crushing of medium-hard and brittle materials.

Using the impact and hammering crushing principle, these crushers offer reliable performance, simple operation, and low maintenance costs.

### Why Choose Crash Crusher Hammer Crushers?

- Simple and robust mechanical design
- High efficiency for brittle materials
- Uniform final product size
- Low power consumption
- Easy maintenance and quick hammer replacement
- Suitable for continuous operation



Model	Max Feed Size mm	Number of hammers	Capacity (TPH)	Power (kw)
HC60	<5	24	8-15	110
HC100	<8	36	15-30	160
HC120	<10	48	25-40	220

## Working Principle

The Hammer Crusher operates with a high-speed rotor equipped with hammers. Material is crushed by repeated hammer impacts and collisions with the crusher housing or grate, until it reaches the required size.

This system ensures:

- Fast and effective crushing
- Controlled product size
- Reliable and stable operation

## Applications

- Quarries
- Cement plants
- Limestone
- Gypsum, Coal, Clay
- Medium-hard and brittle materials

## Key Features

- Reinforced steel structure
- Replaceable wear-resistant hammers
- Balanced rotor for smooth operation
- Bottom grate for product size control
- Reduced vibration and noise levels



# Belt Conveyor

## Conveyor Belt

### Reliable Material Transport for Crushing & Screening Plants

#### Product Overview

Crash Crusher Conveyor Belts are designed to provide efficient continuous, and reliable material handling within crushing and screening plants.

They play a vital role in connecting different stages of the production line, ensuring smooth material flow, reduced downtime, and optimized plant performance.

#### Why Choose Crash Crusher Conveyor Belts?

- Heavy-duty construction for high load capacity
- Reliable and continuous operation
- Customizable lengths and widths to suit project requirements
- Minimal material loss during transportation
- Easy maintenance and long service life
- Fully compatible with all crushing and screening equipment

#### Working Principle

The Conveyor Belt operates using a rubber belt system supported by rollers and a reinforced steel structure, transporting material smoothly from one processing stage to another



## This system ensures:

- Consistent material flow
- Reduced operational interruptions
- Improved overall plant efficiency

## Applications

- Quarrying operations
- Mining applications
- Crushing and screening plants
- Aggregate and sand handling
- Industrial production lines

## Key Features

- Reinforced steel frame for durability
- High-quality wear-resistant rubber belts
- Heavy-duty rollers and shafts
- Flexible design with various lengths and inclinations
- Energy-efficient operation with high conveying capacity



Belt Width (mm)	B600	B800	B1000	B1200	B1400
Belt speed(m/s)	0.8~2.5	1.0~2.5	1.2~3.15	1.2~3.15	1.2~3.5
Capacity (t/h)	80~120	150~300	350~700	400~800	600~1200

## Grizzly Vibrating Feeder

### Reliable Feeding for Heavy-Duty Crushing Operations

#### Product Overview

The Crash Crusher Grizzly Vibrating Feeder is designed to ensure continuous, stable, and uniform feeding of primary crushers.

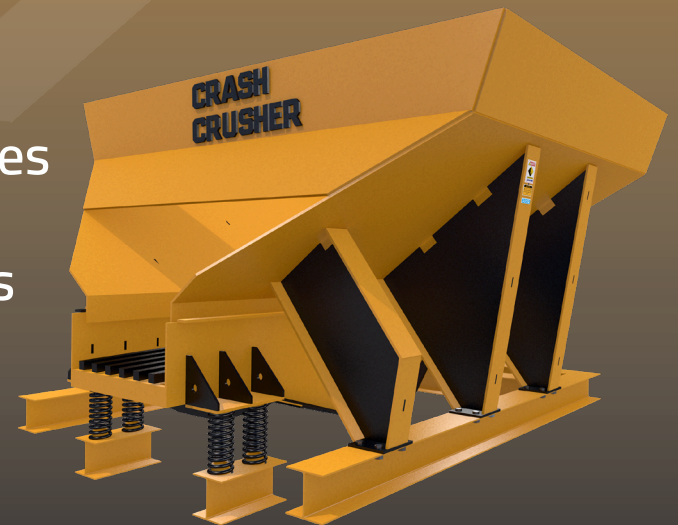
Equipped with an integrated grizzly section, it allows fine materials to be screened out before entering the crusher significantly improving overall crushing efficiency and reducing wear on downstream equipment.

This feeder is an ideal solution for heavy-duty operating conditions, including:

- Quarries
- Mining operations
- Stationary and mobile crushing plants

#### Why Crash Crusher Grizzly Feeder?

- Heavy-duty design suitable for hard rock and large feed sizes
- Integrated grizzly section for pre-screening fine materials
- Smooth and consistent material flow, minimizing blockages
- Balanced vibration for reduced wear and longer service life
- Easy maintenance and low operating costs
- Fully compatible with all types of primary crushers



## Working Principle

The feeder operates using high-reliability vibration motors that generate linear or near-linear motion, ensuring controlled and uniform material flow from the hopper to the crusher.

The grizzly bars perform an essential function by:

Allowing fine materials to pass through

Preventing oversized material from entering the crusher

Reducing the direct load on the primary crusher

## Applications

- Quarry and Mining Operations
- Primary Crushing Plants
- Limestone, Basalt, Granite
- Recycling and Heavy Material Handling

## Key Features

- Reinforced steel structure designed to withstand continuous vibration
- High-efficiency vibration motors
- Adjustable vibration intensity to suit different material types
- Even load distribution across the feeder surface
- Low power consumption with high feeding efficiency



Model	Width x Length	Capacity	Length of Grizzly	Power Vibrometer	rpm	Max. Feed Size	power Exciter Drive
630	3000*600	200-100	1000	2x3,2	900	350	-
940	4000*900	400-250	1500	2x6.1	900	600	-
1050	5000*1000	640-400	2000	2x10.1	900	800	22
1260	6000*1200	750-450	2800	2x11.9	900	900	22

# Vibrating Screen

Efficient Screening for Reliable Material Classification

Product Overview

Crash Crusher Vibrating Screens are engineered to deliver high screening accuracy and reliable material separation across all stages of crushing and screening operations.

They are designed to handle heavy-duty workloads, ensuring consistent performance improved product quality, and optimized plant efficiency.

## Why Choose Crash Crusher Vibrating Screens?

High screening efficiency and accuracy

Heavy-duty construction for continuous operation

Multi-deck configurations for flexible grading

Easy screen media replacement and maintenance

Stable operation with reduced vibration

Suitable for a wide range of materials

## Working Principle

The Vibrating Screen operates through controlled vibratory motion generated by vibration motors or exciters

Material is evenly distributed across the screen surface, allowing precise separation.

according to particle size

This process ensures:

Uniform material flow

Accurate size classification

High screening efficiency



## Applications

Quarrying operations

Mining applications

Crushing and screening plants

Limestone, Granite, Basalt

Aggregate and sand production

## Key Features

Reinforced steel structure for vibration resistance

Interchangeable screening media

Balanced design for smooth and stable operation

High efficiency with optimized power consumption

Long service life with low maintenance requirements



Model	Desks	Power KW	Capacity (t/h)	Dimension (mm)	
				Length	Width
1500X5000	1vs	15-18.5	18.5	5000	1500
	2vs				
	3vs				
2000x6000	1vs	22	22 - 18.5	6000	2000
	2vs				
	3vs				

**control Room**

control Room

## Control Room Specifications

A control room designed to withstand harsh working conditions (dust, vibrations, and noise) while providing a **safe and comfortable environment** for operators.

### Recommended Dimensions & Specifications:

#### 1. Space Requirements:

Minimum **4\*4** meters for **1-2** operators, with a ceiling height of at least **3** meters to avoid a confined feeling.

#### 2. Glass Windows:

Shatter-resistant glass, thickness **12-10** mm

#### 3. Window Area:

Windows should cover at least **30%** of the wall surface to ensure clear visibility of the crusher area.

#### 4. Wall Structure:

Insulated layer between metal sheets, or concrete structure if permanent.

#### 5. Insulation Materials:

Soundproof and thermal insulation to protect from heat and noise.

#### 6. Flooring:

Anti-vibration epoxy coating or treated concrete tiles.

#### 7. Roof:

Metal frame roof covered with fire-resistant panels.

#### 8. Air Conditioning:

Equipped with an industrial-grade air conditioner.

#### 9. Fire Safety:

Fire alarm system with fire extinguishers included.

## 10. Electrical Connections:

- Uninterruptible Power Supply (UPS)
- Main electrical panel with vibration-resistant insulated cables

## 11. Monitoring & Control Systems:

- Real-time crusher monitoring system
- Display screens for operation supervision

## 12. Furniture:

- Anti-vibration ergonomic chairs
- Fixed heavy-duty work desks



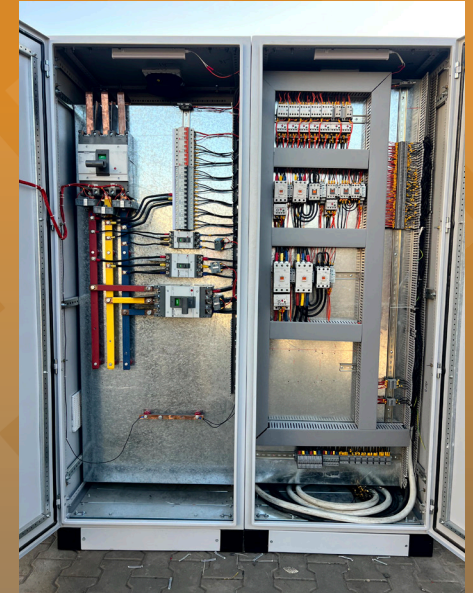
# Electrical Control Panel for Crusher Plants - Smart Control & Industrial Safety by Crash Crusher n crushing

In crushing production lines, every minute of downtime is a loss...

That's why Crash Crusher has developed integrated **Electrical Control Panels** specially designed for jaw crushers, impact crushers, hammer crushers, feeders, conveyors, and vibrating screens—ensuring consistent performance and precise control at every stage.

## Key Features:

- **Fully automated control system** (PLC or traditional relay logic)
- Sequential start-up and shutdown for all machines (Crusher – Feeder – Conveyor)
- Full protection systems against overloads, short circuits, and surges
- Digital ammeters, voltmeters, and hour meters
- Audio/visual alarms for faults
- Easy wiring and maintenance
- Weather-resistant metallic enclosure
- Emergency stop buttons for safety



Description / Value	Item
Main Control Panel + Sub Panels	Panel Type
PLC or Contactor-Based	Control System
50Hz (customizable) - 380V	Input Voltage
Amps (depending on project size) €· Up to	Maximum Current
MCCB + MCB + Overload + Relays	Electrical Protection
Outputs (based on equipment quantity) Γ· to €	Number of Outputs
Galvanized Steel or Stainless Steel	Panel Material
IP65 - IP54	Protection Rating
Natural ventilation or internal fans	Cooling
Push Buttons / Indicator Lamps / HMI Screen	User Interface
Meters, Alarms, Remote Start, GSM Module	Optional Add-ons

## GOLD ADSORPTION UNIT

Model: CIC-1500×2000

Unit No: 01-CIC → 06-CIC

System Type: Continuous Counter-Flow Adsorption System

Application: Gold Recovery – Carbon Adsorption (Activated Carbon)

Mechanical Specifications

Tank Type: Cylindrical – Vertical

Quantity: **6Units**

Diameter: **1.5m**

Height: **2.0m**

Total Volume (Each):  $\approx 3.5\text{m}^3$

Shell Material: Carbon Steel

Internal Lining: Epoxy-Coated (Heavy-Duty Chemical Resistant)

External Coating: Stainless Steel Cladding

Shell Thickness: **8mm**

### Design Parameters

Design Pressure: **10bar**

Test Pressure: **15bar** (Hydrostatic)

Design Temperature: **90**

Operating Pressure: **2-6 bar typical**

Operating Temperature: **60-80 C° typical**

Working Medium: Gold-bearing slurry with activated carbon

Flow Direction: Counter-Flow (solution up / carbon down)

Operation Mode: Continuous adsorption – part of CIC circuit



## Summary – 1500×Heating Tank HT3000

### Main Function:

Heats ethanol and prepares the solution (with optional Soda Ash) for use in the CIC – Carbon in Column gold extraction system

### Heating System:

Five high-efficiency electric heaters

Optional diesel burner (solar burner) connection

### Insulation & Construction:

cm thermal insulation 5

Stainless steel outer cover

Internal and external epoxy coating resistant to chemicals

### Inlets & Outlets:

Front, rear, and top connections for easy integration with the piping network

### Safety & Measurement:

Safety valve

Pressure gauge

Temperature gauge

Liquid level sensor

### Electrical Control Panel (SSR):

Separate or collective heater control

Industrial temperature controller with digital display

Full electrical protection

Automatic shutdown on low level or high temperature

### CIC Line Applications:

Heating ethanol for carbon washing

Preparing chemical solutions

Feeding washing and extraction lines

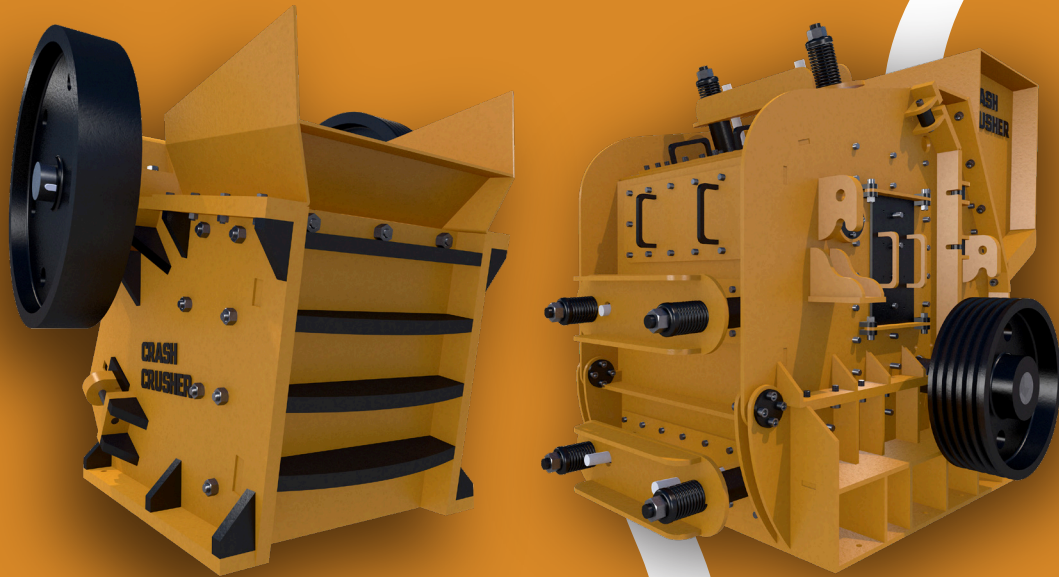
### Manufacturing Advantages:

High-grade stainless steel, strong insulation, advanced SSR heating system, mining-grade durability, easy maintenance, and fully customizable



# CRASH CRUSHER

With Crash Crusher...  
Rock Turns Into Investment



كراش  
كراشر

مع كراش كراشر...  
الصخر يتحول إلى استثمار

تصنيع سوري بمعايير جودة عالمية

+20119929269

[crashcrasherco.com](http://crashcrasherco.com)